

ANTENNAS | HELI-19 SERIES

CIRCULAR POLARISED, BI-DIRECTIONAL MINE/TUNNEL ANTENNA

Dual-band Wi-Fi; 2400 - 2500 MHz, 9 dBi; 5000 - 6000 MHz, 11 dBi



 2400 - 2500 MHz 5000 - 6000MHz	 2.4GHz 9 dBi 5GHz 11 dBi	 Bi-Directional	 Machine to Machine	 IoT	 Wi-Fi DUALBAND
 2x2 MIMO Possible with RHC & LHC combined	 IP 65	 Chemical Protection	 40°C to +70°C	 Fire Resistant	

APPLICATION AREAS

- Mining
- Tunnelling
- MASC
Mining and Surface

- **Circular Polarised HELI antenna provides enhanced signal propagation and connection stability within a tunnel**
- **Left-hand Circular (LHC) & Right-Hand Circular (RHC) Polarised options available**
- **Bi-directional – radiates in both directions in a tunnel**
- **Ruggedized, water and dust ingress protected (IP 65)**
- **Ideal for Mining & Tunnel M2M and IoT deployments**

Product Overview

The HELI-19 forms part of a series of Mini-HELI antennas. These antennas are only mini in size relative to their bigger brothers, the HELI-3, HELI-4 & HELI-8, but offer medium to high gain, which makes these antennas ideal for mining tunnels where IoT/M2M connectivity is deployed and can also be used for coverage into the stopes.

The HELI-19 is a dual-band 2.4 GHz and 5 GHz Wi-Fi antenna, radiating in both directions (i.e. bi-directional). This makes them ideal for the coverage of both Wi-Fi bands in mining and other type of tunnels. These antennas are typically used for the deployment of IoT within the tunnel to provide telemetry and mine automation. These antennas are available in both Left-Hand Circular (LHC) & Right-Hand Circular (RHC) polarised antenna elements to provide optimal decorrelation within a MIMO deployment when using the BRKT-45, resulting in optimum performance. The decorrelation is due to the polarisation difference and spatial diversity, between the two antenna elements, which enhances MIMO performance and RF reliability within a mining tunnel. The dual-band Wi-Fi connection propagates around tunnel bends in a Non-Line of Sight scenario and provides immunity to many Wi-Fi signal disrupting objects such as trains and drilling machinery which appear to obscure the tunnel.

Features

- Dual port 2.4 GHz and 5 GHz Wi-Fi antenna
- This antenna is especially designed for mining and other types of tunnels where rapid extension of network is required
- Bi-directional – radiates in both directions in a tunnel
- Left & Right-hand Circular Polarised available (for MIMO)
- Intrinsically safe version available on request

Application Areas

- Supplementing fibre/leaky feeder cable "Hotspots" to areas to enhance mobility or extend networks to inaccessible areas
- Underground telemetry and automation
- Creating of complete underground in tunnel wide data networks and internet/LTE connectivity
- Seamless connection to personnel using cellular phones and smart devices and tablets



2x HELI-19 antennas mounted on the BRKT-45 for MIMO application



Frequency Bands

The HELI-19 is a Wi-Fi / ISM antenna that works from 2400 – 2500 & 5000 - 6000 MHz



Frequency Bands

Port	1	2
Frequency Bands	2400 - 2500 MHz	5000 - 6000 MHz
Peak Gain	9 dBi	11 dBi
Coax Cable Type	RG-58	RG-58
Coax Cable Length	350mm	350mm
Connector Type	N-Type Male	N-Type Male

Electrical Specifications

Frequency bands:	2400 MHz - 2500 MHz 5000 MHz - 6000 MHz
Gain (max):	9.0 dBi for 2400 MHz – 2500 MHz 11.0 dBi for 5000 MHz - 6000 MHz
VSWR:	<2:1 Over 90% of the bands
Feed power handling:	30 W
Input impedance:	50 Ohm (nominal)
Polarisation:	Circular Polarised (LHC or RHC)
Coax cable loss:	0.97 dB /m @ 2.4 GHz 2.0 dB /m @ 5.8 GHz
DC short:	N/A

Coax Cable & Connector Type

Cable length:	350 mm
Coax cable type:	RG 58
Connector type:	N-Type (Male)

**The coax cable & connector is factory mounted to the antenna*

Product Box Contents

Antenna:	A-HELI-0019-V2-01
-----------------	-------------------

Ordering Information

Commercial name:	HELI-19
-------------------------	---------

a) Right-hand Circular Version

Order product code:	A-HELI-0019-V2-01-RH
EAN number:	6009710920053

b) Left-hand Circular Version

Order product code:	A-HELI-0019-V2-01-LH
EAN number:	6009710920046

Note: For MIMO application, order both Right-Hand Circular and Left-Hand Circular antennas.

Mechanical Specifications

Product dimensions	603 mm x 142 mm x 114 mm
Packaged dimensions:	660mm x 165mm x 140mm
Weight:	1.70 kg
Packaged weight:	2.3 kg
Radome material:	ABS & PVC
Radome colour:	Grey
Mounting Type:	Ceiling mounted

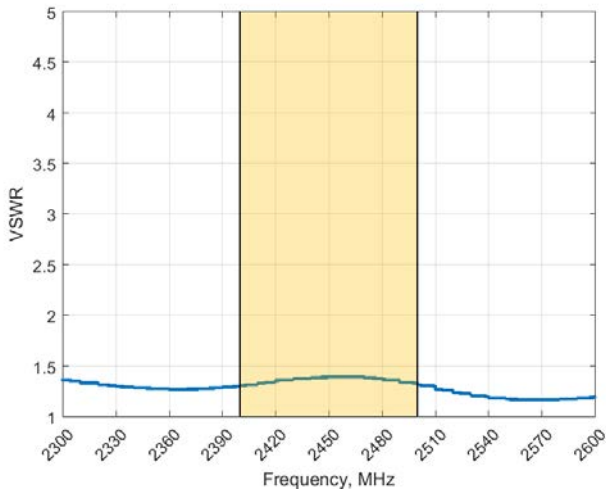
Environmental Specifications, Certification & Approvals

Wind Survival:	<120 km/h
Temperature Range (Operating):	-40°C to +70°C
Environmental Conditions:	Outdoor/Indoor
Water ingress protection ratio/standard:	IP 65
Salt Spray:	MIL-STD 810F/ASTM B117
Operating Relative Humidity:	Up to 98%
Storage Humidity:	5% to 95% - non-condensing
Storage Temperature:	-40°C to +70°C
Enclosure Flammability Rating:	UL 94-HB
Impact resistance:	IK 08
Product Safety & Environmental:	Complies with CE and RoHS standards

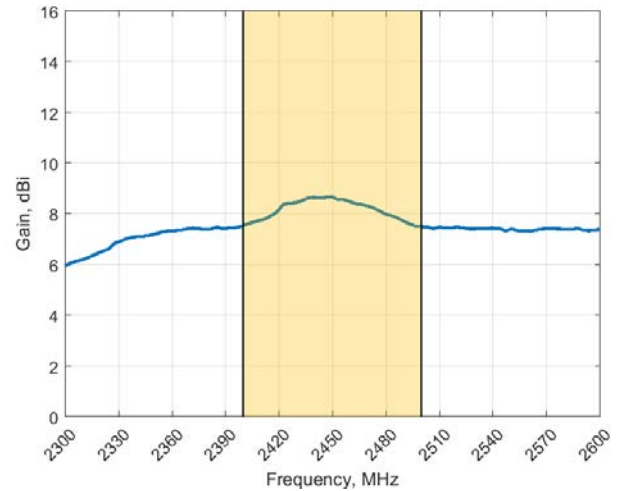


Antenna Performance Plots

VSWR [2400-2500 MHz]



GAIN (EXCLUDING CABLE LOSS)



Voltage Standing Wave Ratio (VSWR)

VSWR is a measure of how efficiently radio-frequency power is transmitted from a power source, through a transmission line, into a load. In an ideal system, 100% of the energy is transmitted which corresponds to a VSWR of 1:1.

The HELI-19 delivers superior performance across all bands with a VSWR of 2:1 or better across 90% of the band.

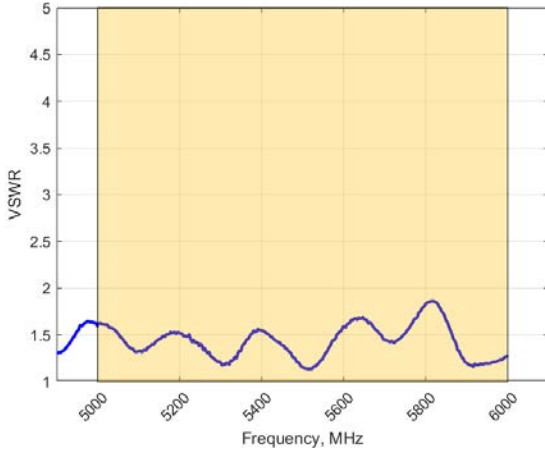
Gain* in dBi

Gain @ 2400 - 2500MHz:

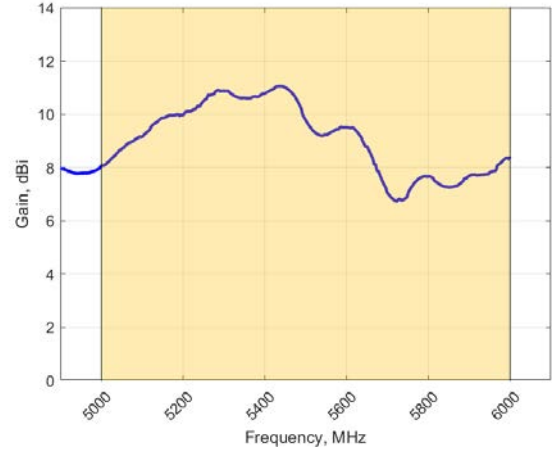
9 dBi

**Antenna gain measured with polarisation aligned standard antenna*

VSWR [5000-6000 MHz]



GAIN (EXCLUDING CABLE LOSS)



Voltage Standing Wave Ratio (VSWR)

VSWR is a measure of how efficiently radio-frequency power is transmitted from a power source, through a transmission line, into a load. In an ideal system, 100% of the energy is transmitted which corresponds to a VSWR of 1:1.

The HELI-19 delivers superior performance across all bands with a VSWR of 2:1 or better across 90% of the band.

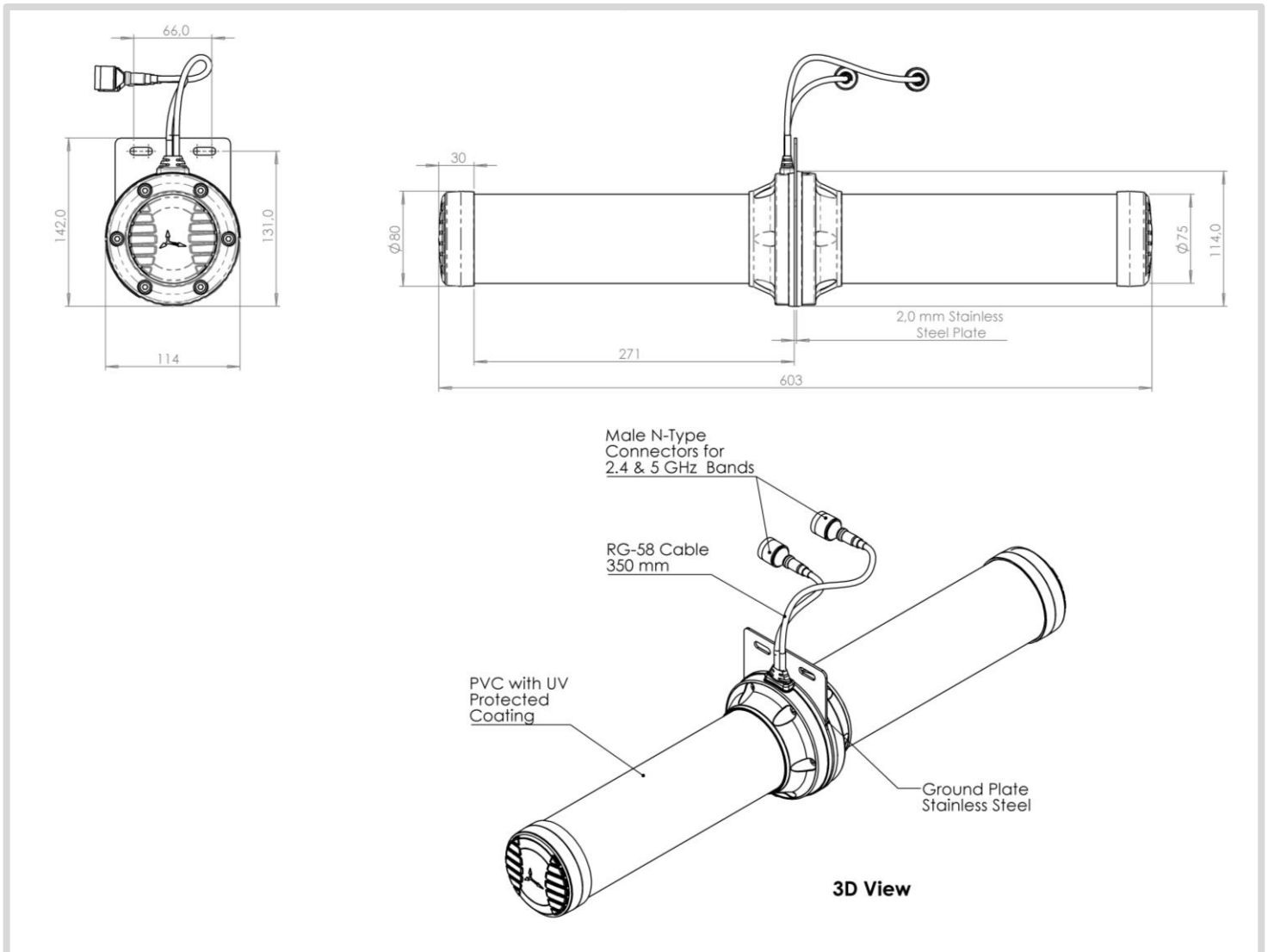
Gain* in dBi

Gain @ 5000 - 6000MHz:

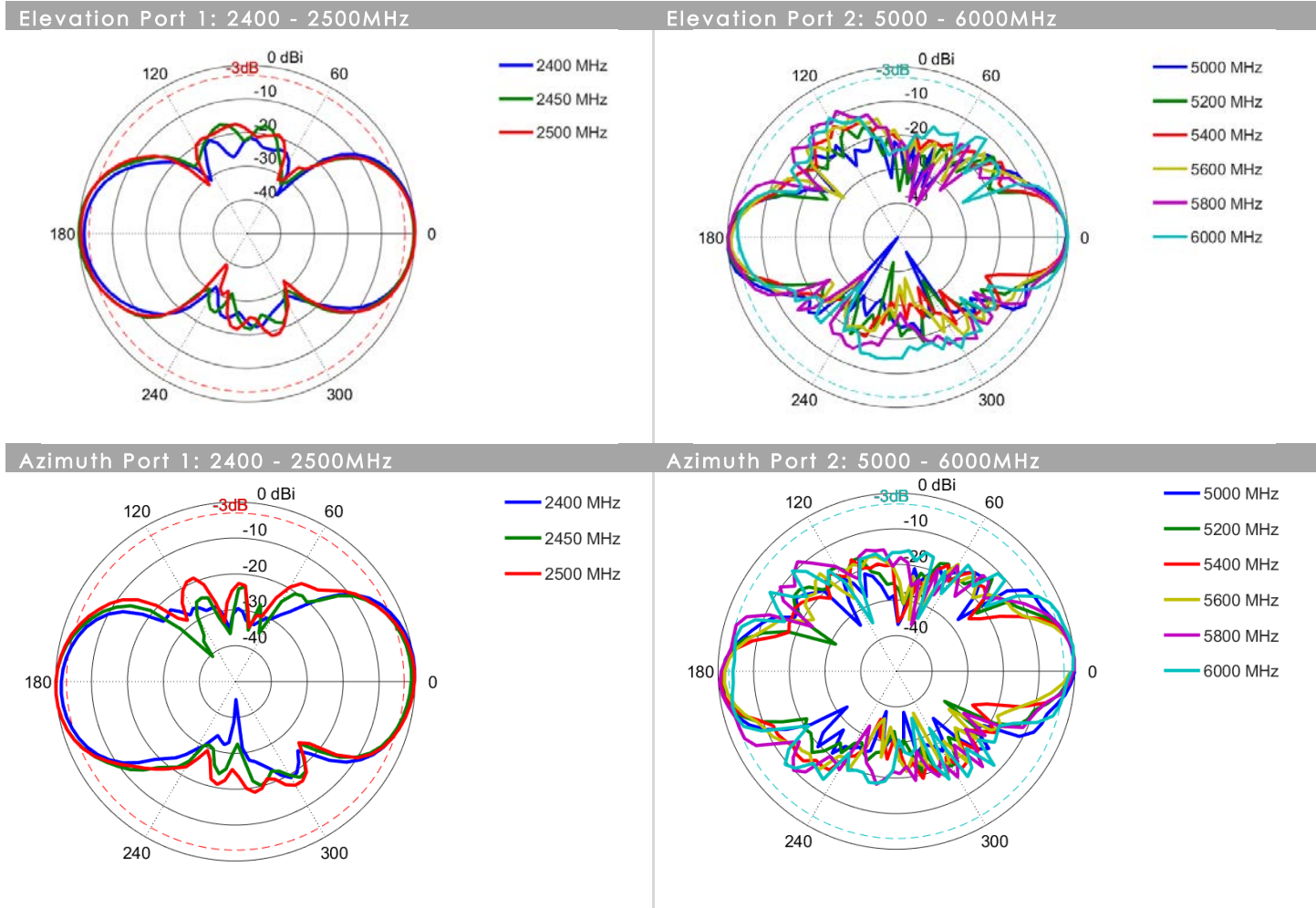
11 dBi

**Antenna gain measured with polarisation aligned standard antenna*

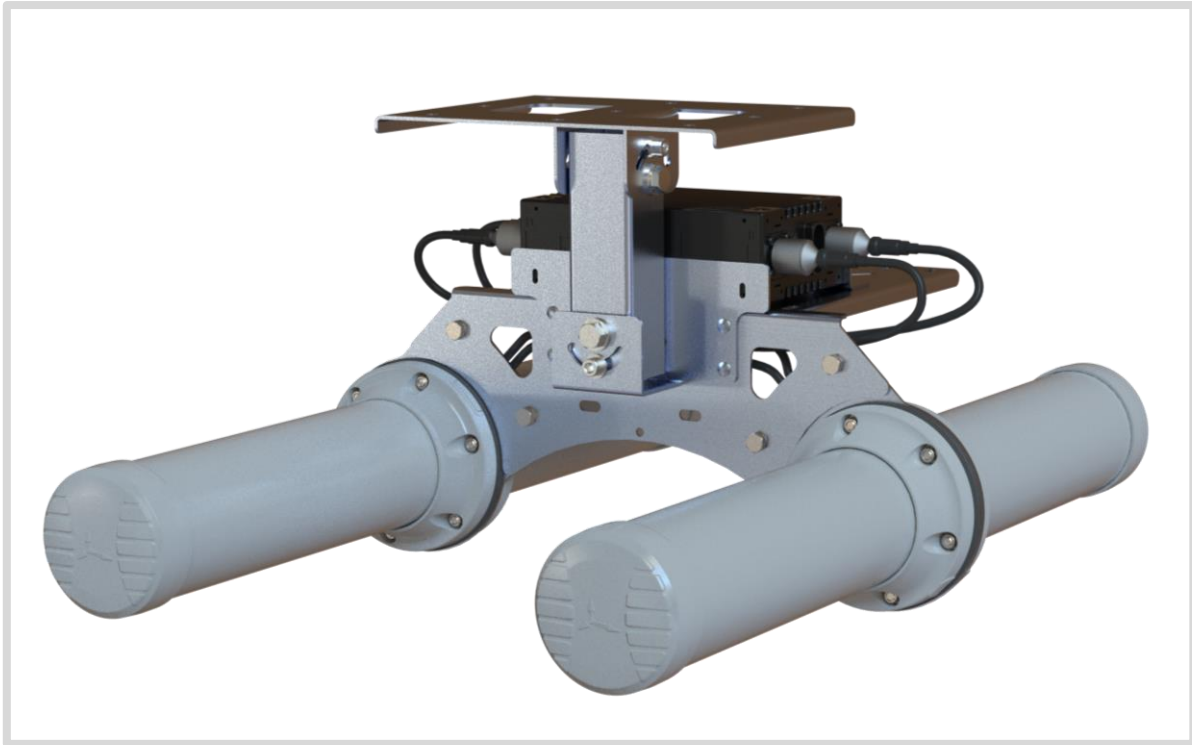
Technical Drawings



Radiation Patterns



Antenna Assembly Options



Complete assemblies available with antennas and brackets:

A-HELI-0022-V2-01 consists of:

- A-HELI-0019-V2-01-LH _ Left-Hand, Circular polarised bi-directional antenna
- A-HELI-0019-V2-01-RH _ Right-Hand, Circular polarised bi-directional antenna
- A-BRKT-045-V2-01 _ Ceiling Mount, swivel bracket

A-HELI-0022-V2-02 consists of:

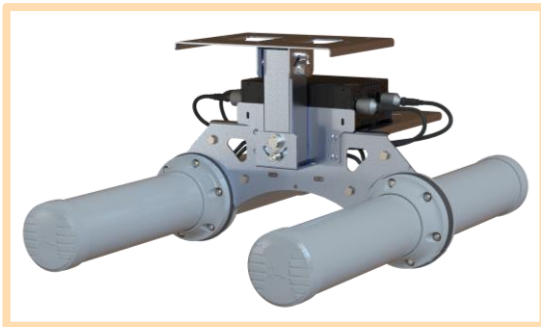
- A-HELI-0019-V2-01-LH _ Left-Hand, Circular polarised bi-directional antenna
- A-HELI-0019-V2-01-RH _ Right-Hand, Circular polarised bi-directional antenna
- A-BRKT-045-V2-01 _ Ceiling Mount, swivel bracket
- A-BRKT-047-V1-01 _ Mine roof bolt attachment accessory

Mounting Options



Base Mount

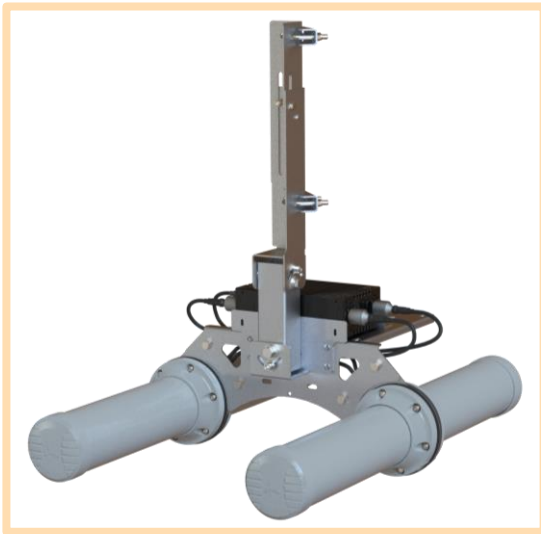
The antenna can be suspended directly using the two slots on its base.



Ceiling Mount (MIMO) - Optional

An optional Multi-directional swivel bracket is available for mounting 2 x miniHELI antennas (right-hand circular and left-hand circular polarised antennas) to a ceiling for MIMO application.

This option uses A-BRKT-045-V2-01.



Roof Bolt Mounting - Optional

This optional 20mm roof bolt mounting bracket attachment is used in conjunction with BRKT-45 for mounting to standard mine roof bolts.

This option uses A-BRKT-047-V1-01.

Additional Accessories



A – BRKT – 045 -V2 - 01

Ceiling mounting bracket for holding miniHELI right-hand and left-hand circular polarised antennas.



A – BRKT – 047 -V1- 01

Ceiling 20mm rod mounting bracket attachment to use with BRKT-45.

Contact Us

USAT | Connect What's Critical™

605 Eastowne Drive
Chapel Hill, NC 27514

Phone: (919) 942-4214

E-mail: info@usatcorp.com

Web: <https://usatcorp.com>