

# MXFG708

## PRODUCT OVERVIEW

The 7-cable MXFG708 (2x Sub-6 LTE, 4x WiFi, GNSS) Antennas include two Global 4G LTE & 5G ready antennas, four WiFi antennas and one GNSS antenna. This provides MIMO (multiple-input-multiple-output) coverage for both Cellular and WiFi. The GNSS element operates on GPS, Galileo, Glonass, QZSS or Beidou at 1561, 1575, & 1602 MHz. This Global LTE antenna covers: 617-960 & 1710-6000 MHz. If you are looking for a multiband 5G Ready antenna, this is the solution you've been looking for!

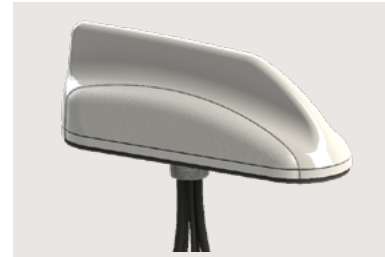
This antenna covers all Cellular bands, worldwide. In the US, this includes the CBRS (Citizen Band Radio Service) at 3.55-3.7 GHz and Band 71 at 617-698 MHz.

Measuring 7.50" (19cm) in length, 2.25" (5.7cm) width, and 2.50" (6.4cm) tall the MXFG708 significantly takes up less space than multiple antennas. The radome is available in either black or white.

These antennas are also available with a GPS-only module, specificity MXF708.

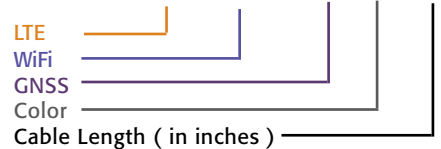
Electrical Specifications		
Frequency & Gain	Cables 1 - 2	LTE 617-700 MHz, 1 dBi LTE 700-960 MHz, 3 dBi LTE 1700-2700 MHz, 4 dBi LTE 3400-4200 MHz, 6 dBi LTE 4900-6000 MHz, 6 dBi
	Cables 3 - 6	2.4-2.5 & 4.9-6.0 GHz, 5 dBi
	Cable 7	1561, 1575, & 1602 MHz, LNA 26 dB, 5 dBi
VSWR	< 2.5:1	
Impedance	50 Ohm Nominal	
Power Rating	10 Watts	
GNSS	Amplifier Gain & Bias Voltage	26 dB 3 to 5 VDC
	Noise Figure	2.0 dB max, 1.7 dB typical
	Current	20 mA max, 10 mA typical

Mechanical Specifications	
Radome Material & Color	ASA UV-Stable Plastic, Available in Black or White
Radome Dimension	7.50" (19cm) L x 2.25" (5.7cm) W x 2.50 (6.4cm)T
Standard Connectors	SMA Plugs ( Male )
Cables 1 - 6	LL-195, 15-feet ( 152 cm )
Operating Temperature	-40° to +80° C
Mounting	Thru Hole, Ground Plane Dependant
Shock & Vibration	IEEE1478, EN 61373, MIL-810G, TIA 329.2-C
Water Ingress	IP67



## 7 - i - n - 1 Multiband ANTENNA

MXFG708-3C3C3C3C3C2C-BLK-180



## HIGHLIGHTS:

- Multiband: 2x Sub-6 LTE, 4x WiFi, 1x GNSS
- 5G ready for 617 - 6000 MHz
- Including CBRS & Band 71
- High Performance, High Gain
- Made-in-the-USA & UK

## RELATED MODELS:

- LLPG708 ( Same Freq. Lower Profile )
- MXF708 ( GPS-only Model )
- LTMG708 ( Same Freq. Lower Profile )

## COMMON MARKETS:

- Vehicle Fleet Management; will cover Cellular/WiFi/GNSS
- Fixed Site such as RSU or Traffic Management
- Use with Multiband modems with 3 WiFi Ports