

MXFG602

PRODUCT OVERVIEW

Mobile Mark's MXF602 Multiband Diversity/MIMO antenna contains six separate antenna elements, all in one compact antenna housing: two broadband LTE/Cellular antennas, three dual-band WiFi antennas, and one GNSS antenna. The GNSS element operates on GPS, Galileo, Glonass, QZSS or Beidou at 1561, 1575, & 1602 MHz. The MXFG602 covers Cellular LTE frequencies from 694-3700 MHz, including the new CBRS band at 3.55-3.7 GHz and Band 71 at 617-698 MHz.

The New MaxFin Antenna has been well received because it is compact, attractive and high performance. The antenna housing contains a stylish combination of matte & polished finish, providing a sleek, high-tech look on the vehicle.

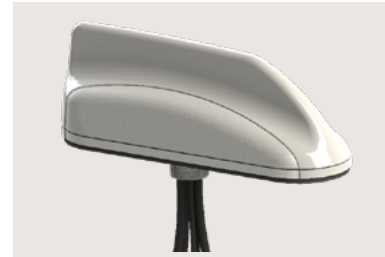
Measuring 7.50" (19cm) in length, 2.25" (5.7cm) width, and 2.50" (6.4cm) tall the MXFG602 significantly takes up less space than multiple antennas. The radome is available in either black or white.

These antennas are also available with a GPS-only module, specify MXF602.

Visit our eStore to customize a MXFG Fleet Management Antenna Online.

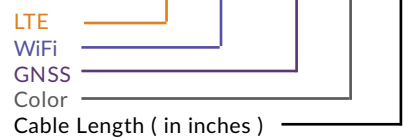
Electrical Specifications		
Frequency & Gain	Cables 1 - 2	694-960 MHz, 0-3 dBi 1710-3700 MHz, 4 dBi
	Cables 3 - 5	2.4-2.5 & 4.9-6.0 GHz, 5 dBi
	Cable 6	1561, 1575, & 1602 MHz, LNA 26 dB, 5 dBi
VSWR	LTE: 2.5:2 VSWR over Range WiFi: 2:1 VSWR over range	
Impedance	50 Ohm Nominal	
Power Rating	10 Watts	
GNSS	Amplifier	3 to 5 VDC
	Noise Figure	2.0 dB max, 1.7 dB typical
	Current	20 mA max, 10 mA typical

Mechanical Specifications	
Radome Material & Color	ASA UV-Stable Plastic, Available in Black or White
Radome Dimension	7.50" (19cm) L x 2.25" (5.7cm) W x 2.50 (6.4cm)T
Standard Connectors	SMA Plugs (Male)
Cables 1 - 5	LL-195, 15-feet (152 cm), other options av.
Operating Temperature	-40° to +80° C
Mounting	Thru Hole, Ground Plane Dependant
Shock & Vibration	IEEE1478, EN 61373, MIL-810G, TIA 329.2-C
Water Ingress	IP67



6 - i n - 1 M u l t i b a n d A N T E N N A

MXFG602-3C3C3C3C2C-BLK-180



HIGHLIGHTS:

- Multiband: 2x LTE, 3x WiFi, 1x GNSS
- WiFi elements can be used for separate WiFi modems
- Available with a GPS only combo
- Made-in-the-USA & UK

RELATED MODELS:

- LLPG602 (Same Freq. Lower Profile)
- MXF602 (GPS-only Model)
- LTMG602 (Same Freq. Dif. Radome)

COMMON MARKETS:

- Vehicle Fleet Management; will cover Cellular/WiFi/GNSS
- Fixed Site such as RSU or Traffic Management
- Use with Multiband modems with 3 WiFi Ports