

MXFG302

PRODUCT OVERVIEW

Mobile Mark's MXFG302 Multiband Diversity/MIMO antenna contains four separate antenna elements, all in one compact antenna housing: two broadband LTE/Cellular antennas, and one GNSS antenna. The GNSS element operates on GPS, Galileo, Glonass, QZSS or Beidou at 1561, 1575, & 1602 MHz. The MXFG302 covers Cellular LTE frequencies from 694-3700 MHz.

The New MaxFin Antenna has been well received because it is compact, attractive and high performance. The antenna housing contains a stylish combination of matte & polished finish, providing a sleek, high-tech look on the vehicle.

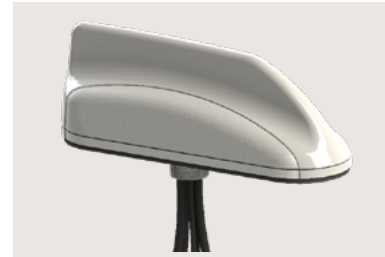
Measuring 7.50" (19cm) in length, 2.25" (5.7cm) width, and 2.50" (6.4cm) tall the MXFG302 significantly takes up less space than multiple antennas. The radome is available in either black or white.

These antennas are also available with a GPS-only module, specify MXF302.

Visit our eStore to customize a MXFG Fleet Management Antenna Online.

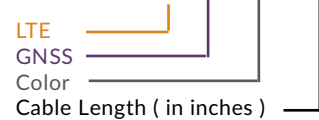
Electrical Specifications		
Frequency & Gain	LTE Cables 1 & 2	694-960 MHz, 0-3 dBi 1710-3700 MHz, 4 dBi
	GNSS Cable 3	1561, 1575, & 1602 MHz, LNA 26 dB, 5 dBi
VSWR	< 2:1	
Impedance	50 Ohm Nominal	
Power Rating	10 Watts	
GNSS	Amplifier	3 to 5 VDC
	Noise Figure	2.0 dB max, 1.7 dB typical
	Current	20 mA max, 10 mA typical

Mechanical Specifications	
Radome Material & Color	ASA UV-Stable Plastic, Available in Black or White
Radome Dimension	7.50" (19cm) L x 2.25" (5.7cm) W x 2.50 (6.4cm)T
Standard Connectors	SMA Plugs (Male)
Cables 1 & 2	LL-195, 15-feet (152 cm), other options av.
GNSS Cable 3	RG-174, 15-Feet (152 cm), other options av.
Operating Temperature	-40° to +80° C
Mounting	Thru Hole, Ground Plane Dependat
Shock & Vibration	IEEE1478, EN 61373, MIL-810G, TIA 329.2-C
Water Ingress	IP67



3 - i n - 1 M u l t i b a n d A N T E N N A

MXFG302-3C3C2C-BLK-180



HIGHLIGHTS:

- Multiband:
2x Sub-6 LTE, 1x GNSS
- 5G ready for 617 - 6000 MHz
- Including CBRS & Band 71
- High Performance, High Gain
- Made-in-the-USA & UK

RELATED MODELS:

- LLPG302
(Same Freq. Lower Profile)
- MXF302
(GPS-only Model)
- MXFG308
(600 - 6000 MHz 5G Coverage)
- LTMG302
(695 - 3700 MHz Coverage)

COMMON MARKETS:

- Vehicle Fleet Management; will cover Cellular/GNSS
- Fixed Site such as RSU or Traffic Management