

LTMG941

PRODUCT OVERVIEW

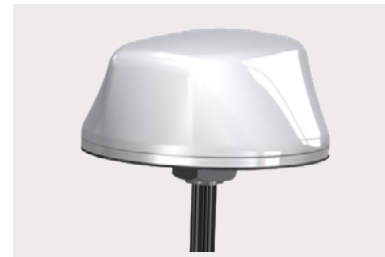
The LTMG941 is a 6-cable antenna with 4x LTE, 1x WiFi and 1x GNSS. With 6-elements, the LTMG941 antenna provides a good match for the dual carrier modems that contain two pairs of LTE MIMO elements, one pair for each carrier. These fleet management systems offer Cellular carrier back-up. The WiFi element provides faster through-put for the advanced WiFi processors.

The LTMG941 covers all Global Cellular & LTE frequencies. It also covers CBRS, Private LTE, and 5-G ready. GNSS operates on GPS, Galileo, Glonass, QZSS or Beidou.

Specify LTM941 for a model configured with GPS only.
Visit our eStore to customize an Antenna Online.

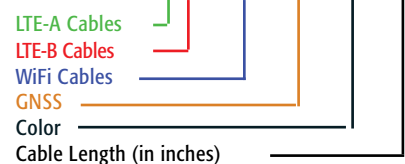
Electrical Specifications		
Frequency & Gain	LTE Cables 1 - 4	694-960 MHz, 2 dBi 1710-3700 MHz, 5 dBi
	WiFi Cable 5	2.4-2.5 & 4.9-6.0 GHz, 5 dBi
	GNSS Cable 6	1560-1606 MHz, 16 dB LNA, 1.5 dB (RHCP)
VSWR	LTE	<2.5:1 VSWR over range (with 12" LMR-100)
	WiFi	<2:1 VSWR over range (with 12" LMR-100)
Impedance	50 Ohm Nominal	
Power Rating	10 Watts	
GNSS	LNA Voltage	1.8 VDC +/- 0.2 V
	Noise Figure	2.0 dB max, 1.7 dB typical
	Current	3.2 mA (Max.)

Mechanical Specifications		
Radome Material & Color	ASA UV-Stable Plastic, Available in Black or White	
Radome Dimension	5.50" (140 mm) Dia x 2.78" (70.4 mm)H	
1ft Pigtail Cable & Connectors Exiting Antenna	LTE	LMR-100 w/SMA Plugs LTEA (Green) & LTE-B (Red)
	WiFi	LMR-100 w/ SMA Plugs (Blue)
	GNSS	RG-174 w/ SMA Plugs (yellow)
Including 14ft Jumper Cables & Connectors	LTE	LL-195 with SMA Jack & SMA Plugs LTE-A (Green) & LTE-B (Red)
	WiFi	LL-195 with SMA Jack & Rev Pol SMA Plugs (Blue)
	GNSS	RG-174 with SMA Jack & SMA Plugs (Yellow)
Operating Temperature	-40° to +80° C	
Mounting	Thru Hole, Ground Plane Dependant	
Shock & Vibration	IEEE1478, EN61373, MIL-810G, TIA 329.2-C	
Water Ingress	IP67	



Multiband ANTENNA

LTMG941 - A3C B3 CW3J G2C - WHT - 180



HIGHLIGHTS:

- Multiband:
4x LTE, 1x WiFi, 1x GNSS
- Dual-Carrier MIMO
- Covers 694-3700 MHz
- 1Ft Cable Pigtails Exit Antenna;
14Ft Cable Jumpers Provided
- Color Coded Cable Type for EASY Match-up
- Made-in-the-USA & UK

RELATED MODELS:

- LTMG944 (4xWiFi)
- LTMG943 (3x WiFi)
- LTMG942 (2x WiFi)
- LTMG940 (NO WiFi)
- LTMWG944
(Wider Freq, Sub-6 & 5G Ready)

COMMON MARKETS:

- Vehicle Fleet Management
- WiFi Data Transfer
- Multiband Modems
- Public Transportation