



ALMS Advanced Reporting and Analytics

Advanced Historical Reporting and Real-time Data for your Fleet of AirLink Gateways and Routers

REPORTING FEATURES

- Pre-defined report content
- Tabular and map-based results
- Scheduled or run on demand
- Geofencing
- Export reports as PDF, Excel or KML files
- Printable output

ALMS Advanced Reporting and Analytics (ALMS ARA) has all the same powerful core capabilities in ALMS but adds advanced historical reporting capabilities through a series of pre-defined reports that provide insight into the range of telemetry data from AirLink routers and gateways. ALMS ARA includes geofencing capabilities for additional insight, and supports higher data reporting rates from the AirLink devices than is currently available in ALMS. The ALMS ARA features are available at an additional monthly cost for all ALMS users.

HISTORICAL REPORTING

AirLink devices can collect an incredible amount of information about your devices and their environment. ALMS ARA includes a series of historical reports that leverage this rich, real-time data source. This initial release of ALMS ARA is focused on vehicle telemetry reports and leverages the ability to collect vehicle information by connecting your AirLink devices to the vehicle diagnostic port and wiring it to provide ignition sense.

ZONES (GEOFENCING)

As many of the reports that are included with ALMS ARA are geographic in nature, ALMS ARA includes access to geofencing capabilities. The Zones feature allows users to upload KML files or create Zones in the ALMS UI that define geographic areas. These Zones can be used when running reports to both Include and Exclude results for report generation.

HIGHER REPORTING FREQUENCY

To support the reporting capabilities of ALMS ARA, a supported AirLink device must be configured with the an AAF app called AVTA. This application will stream data to ALMS on an as-needed basis, enabling an almost real-time feed of data, depending on the behavior of the device¹. ALMS ARA customers will see much more data in the system as a result.

¹To support the reporting capabilities of ALMS ARA, your AirLink devices will require the AVTA 1.1.2 (or later) AAF app to be installed.



When used with supported and correctly configured AirLink devices (see note 1) ALMS ARA supports high frequency data collection and storage of device data, providing near real-time feed of data and rich historical reports.

In addition, ALMS ARA customers can set the Heartbeat frequency to as frequent as once per minute, enabling devices to check in for ALMS Operations (e.g. firmware update requests, changes to configuration, reboot requests) on a near real-time basis. Default Status Report and Dataset communications will continue to have a maximum frequency of once every 15 minutes.

EXTENDED DATA RETENTION

The standard ALMS offering stores user data for up to three months, after which it is deleted from the system. Data retention for ALMS ARA customers is extended up to 12 months, enabling a much deeper set of data for analysis and reporting. The default account setting will remain at 3 months, but administrators of the account can extend it to up to 12 months, to align with corporate policies on data retention.

UNLIMITED USER ACCOUNTS

ALMS ARA will allow for customers to have an unlimited number of User accounts in their ALMS ARA company. The current limit for Standard and Free Tier ALMS accounts is 10 users.

UNLIMITED ADMIN ACCOUNTS

ALMS ARA will allow for customers to have an unlimited number of Admin accounts in their ALMS ARA company. The current limit for Standard and Free Tier ALMS accounts is 5 admin users.

API ACCESS

As with all ALMS features, the complete range of ALMS ARA features and data are support by the AirVantage APIs. This enables system-to-system integration to pull data from AirVantage into other corporate systems such as CAD or DMS.

Advanced Reporting that Provides Insight into your Fleet of Devices.

ALMS ARA provides context to the large amount of telemetry data that is reported from AirLink devices to ALMS. The ALMS ARA historical reports take the powerful monitoring capabilities of ALMS and enables you to drive deep into the rich historical data set that is generated across your fleet of devices.

HISTORICAL REPORTING

ALMS ARA provides a variety of historical reports that make use of rich telemetry data coming from AirLink devices. These reports are focused on vehicle telemetry and location reporting.



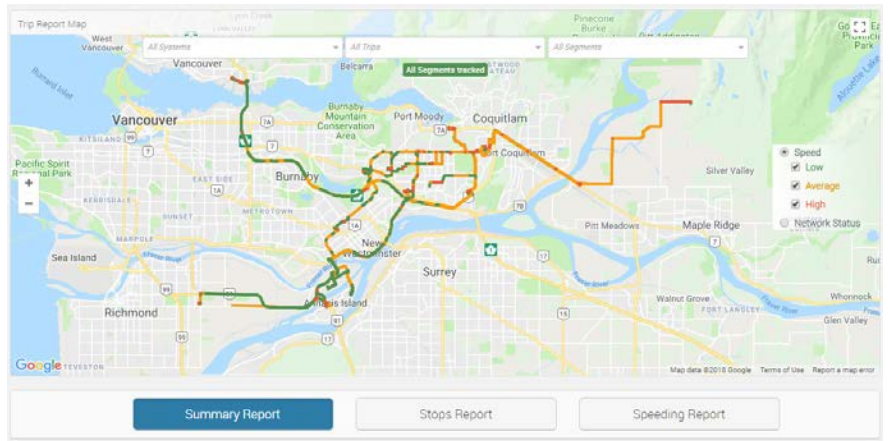
VEHICLE TELEMETRY HISTORICAL REPORTS

These reports use data collected from the vehicle bus on both light (ODB-II) and heavy duty (J1939) vehicles when connected to a device like the AirLink MP70 LTE Advanced Vehicle Router. These reports can be run on one or group of vehicles over a selected reporting range.

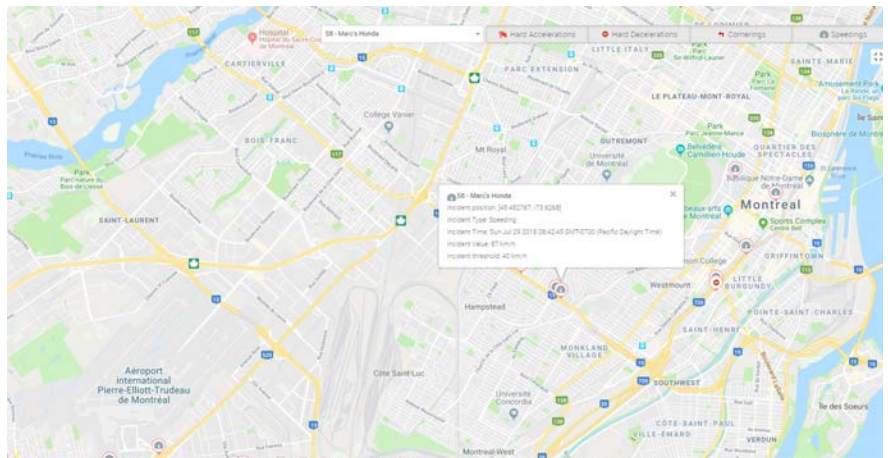
Trips Report: Know what your fleet of vehicles have been doing with a historical view of vehicle location, with stop locations, speeding against posted limits, and network connectivity status data.

ALMS ARA IS A DYNAMIC, EVOLVING PRODUCT

ALMS is a cloud-based, dynamic product that is continually evolving. As an ALMS ARA user, you can expect that more great content will continue to be added to the product over time. Additional reports are in development and will get released as they are completed.



Driver Behavior: Help keep your drivers safe and manage performance measuring driving habits such as hard acceleration, hard deceleration, cornering and speeding.





Vehicle Report: The Vehicle report provides a high-level overview of the vehicle that the AirLink device is installed in, providing the device serial number, the vehicle's VIN and the total miles driven for each vehicle during the reporting period.

Vehicle Utilization: Save time in tracking which gateway devices are installed in which vehicles with an inventory of all gateways in vehicles in, providing the device serial number, the vehicle's VIN and the total miles driven for each vehicle

Engine Fault Summary: Get a complete picture of vehicle utilization including total engine time, trip time, idle and PTO time based on the vehicle configuration.

ALMS AND ALMS ARA COMPARISON

	AirLink[®] Management Service	AirLink[®] Management Service ARA
Device & Configuration Management	Yes	Yes
Remote Firmware Updates	Yes	Yes
Dashboards and Widgets	Yes	Yes
Real-Time Alerts	Yes	Yes
API Access	Yes	Yes
Historical Reports	No	Yes
Geofencing (Zones)	No	Yes
Extended Data Frequency	No	Yes
ALMS Users	Up to 10	Unlimited
Data Retention	Up to 3 months	Up to 12 months

For more information contact us:



USAT | Connect What's Critical
605 Eastowne Drive, Chapel Hill, NC 27514

Phone: (888) 550-8728
Email: info@usatcorp.com
Web: <https://usatcorp.com>

About Sierra Wireless

Sierra Wireless (NASDAQ: SWIR) (TSX: SW) is an IoT pioneer, empowering businesses and industries to transform and thrive in the connected economy. Customers Start with Sierra because we offer a device-to-cloud solution, comprised of embedded and networking solutions seamlessly integrated with our IoT services. OEMs and enterprises worldwide rely on our expertise in delivering fully integrated solutions to reduce complexity, turn data into intelligence and get their connected products and services to market faster. Sierra Wireless has more than 1,400 employees globally and operates R&D centers in North America, Europe and Asia.

For more information, visit www.sierrawireless.com.

